



Funded by  
the European Union



EU Music 360 Project Consortium Meeting

28th – 29th/30th April 2025

@ Espoo/Helsinki, Finland

Address: Keilasatama 2 A, Espoo, Finland

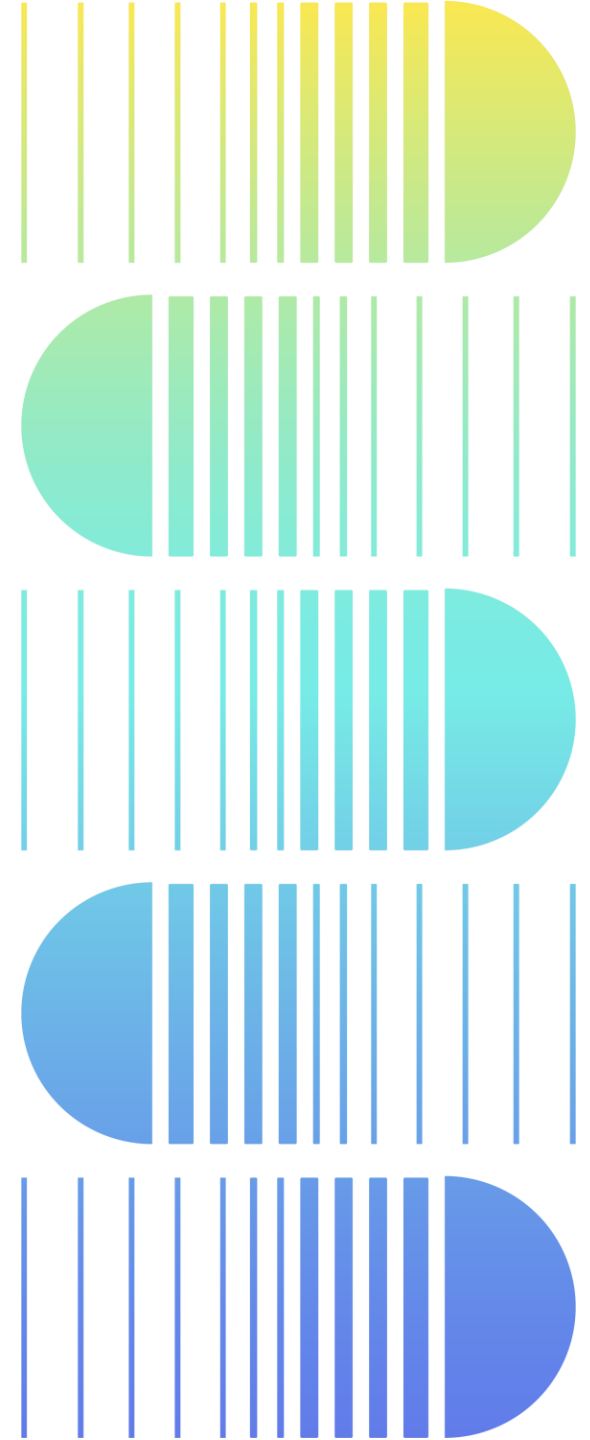


GRAMEX & TEOSTO

**MUSIIKKILUVAT.FI**

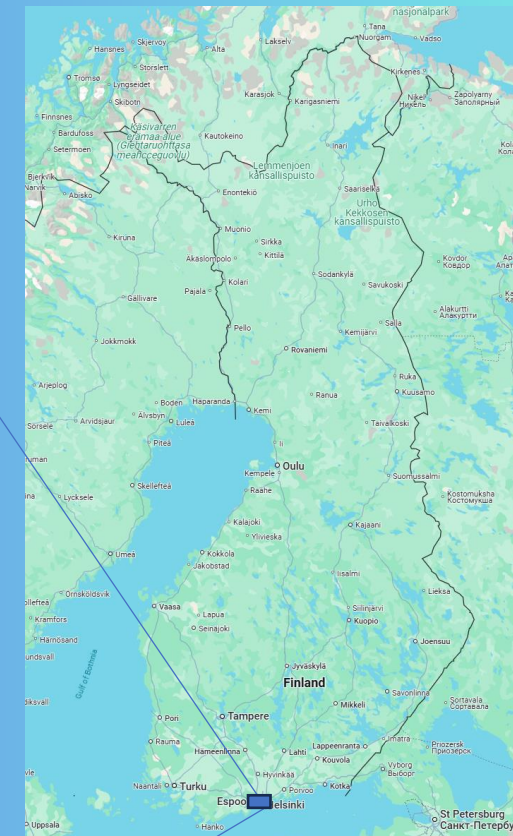
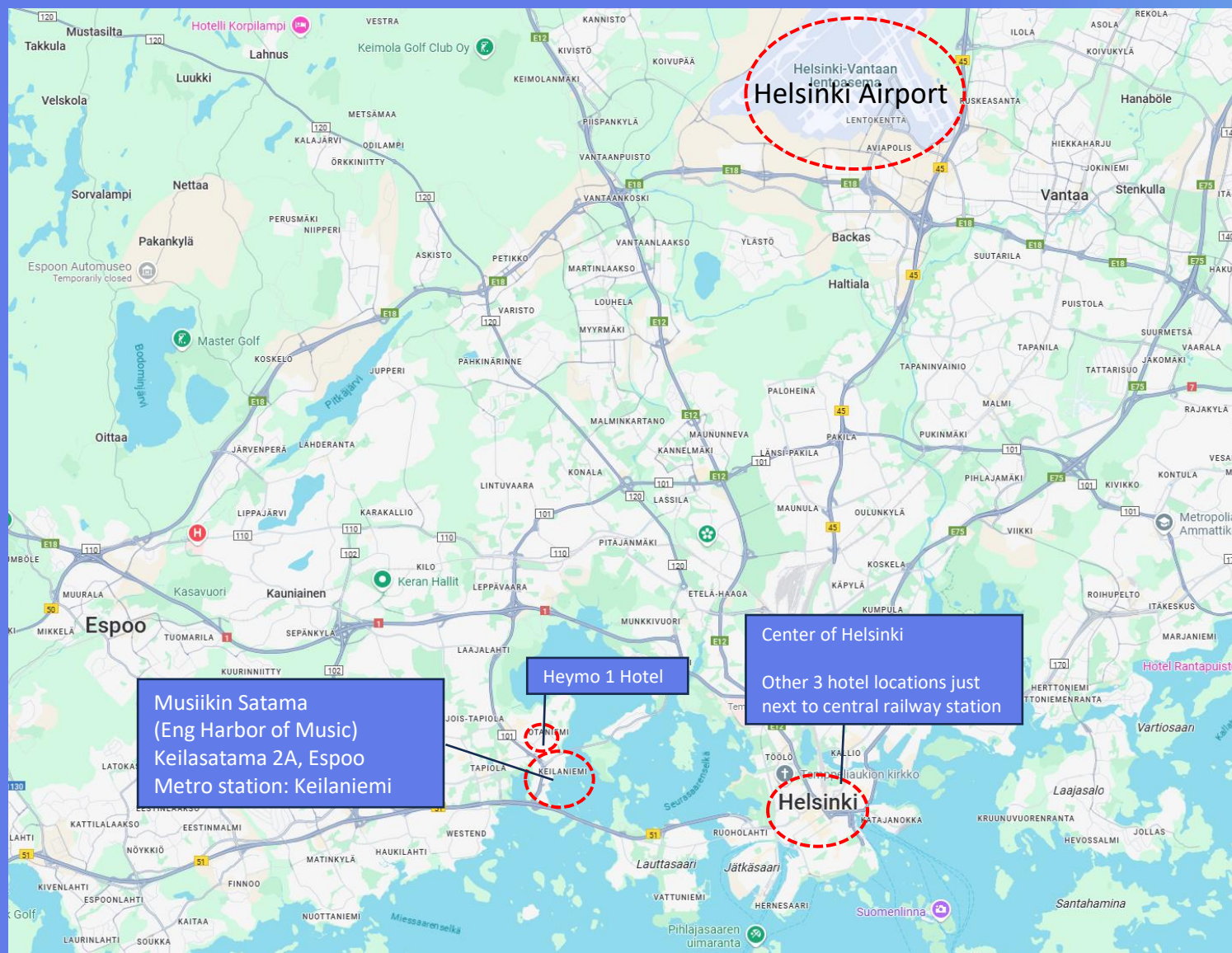
# Welcome to Finland and Musiikin Satama ☺

Address: Keilasatama 2 A, Espoo (Eng. Harbor of Music)





# Airport, Musiikin Satama and main trainstation on the map





# Accommodation options

## **Heymo 1** (Miestentie 5, 02150 Espoo)

- 5-10 min walking distance from meeting location, modern and affordable
- [Heymo 1 by Sokos Hotels | Hotels Espoo - sokoshotels.fi](https://sokoshotels.fi/heymo-1)

## **Original Sokos Hotel Vaakuna** (Asema-Aukio 2, 00100 Helsinki)

- located in the center of Helsinki, next to the railway station, 5 metro stops from meeting location
- [Original Sokos Hotel Vaakuna, Helsinki | Hotels Helsinki - sokoshotels.fi](https://sokoshotels.fi/original-sokos-hotel-vaakuna-helsinki)

## **Scandic Grand Central Helsinki** (Vilhonkatu 13, 00100 Helsinki)

- located in the center of Helsinki, next to the railway station, 5 metro stops from meeting location
- [Scandic Grand Central Helsinki | Hotel in Helsinki | Scandic Hotels](https://scandic-hotels.fi/hotels/helsinki/scandic-grand-central-helsinki)

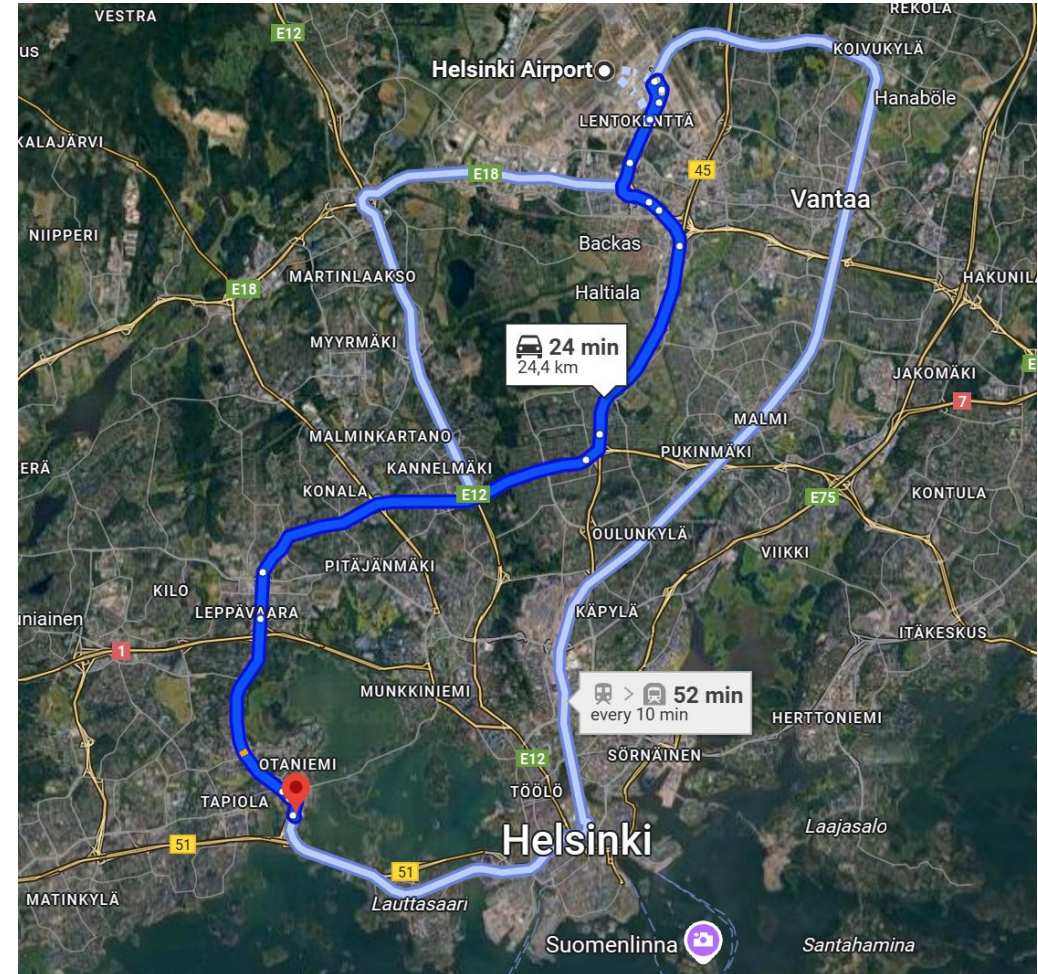
## Other special accommodation options in Helsinki City center area:

- [Lapland Hotels Bulevardi](https://laplandhotels.fi/bulevardi)
- [Hotel in Helsinki | Lilla Roberts](https://lilla-roberts.fi/helsinki)



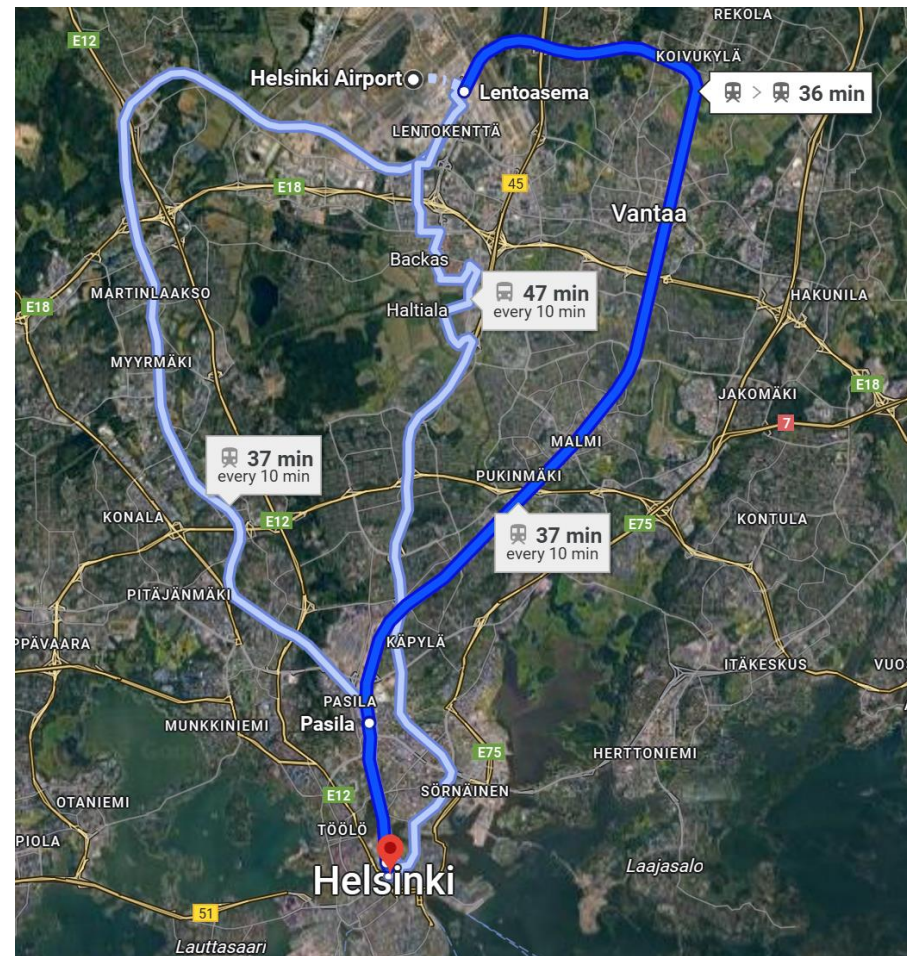
## Arriving Musiikin Satama **by Taxi** (or train/bus)

- It takes about **25 minutes** from airport to Musiikin Satama (or Heymo 1 hotel) **by Taxi**
- There is also a **airport train** or bus + metro option but it takes about **55 minutes** that way



# Arriving Helsinki Center by Train

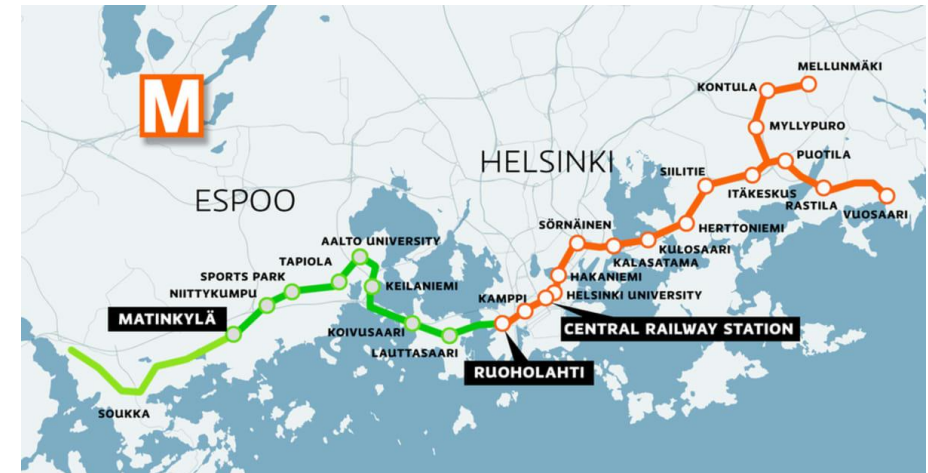
- Taking the **airport train to Helsinki Center** (Central Railway Station) takes about **40 minutes**





# Arriving Musiikin Satama by Metro

- **Musiikin Satama** is located just next to **Keilaniemi** metro station (just 30 meters walk from **metro exit F**).
- **Keilaniemi** is 10 minutes and 5 metro stops from central railway station



# Lunch & Dinner @ Keilaniemi (all next to Musiikin Satama)

Lunch Day 1: Date with Dylan

[Date with Dylan | dylan](#)



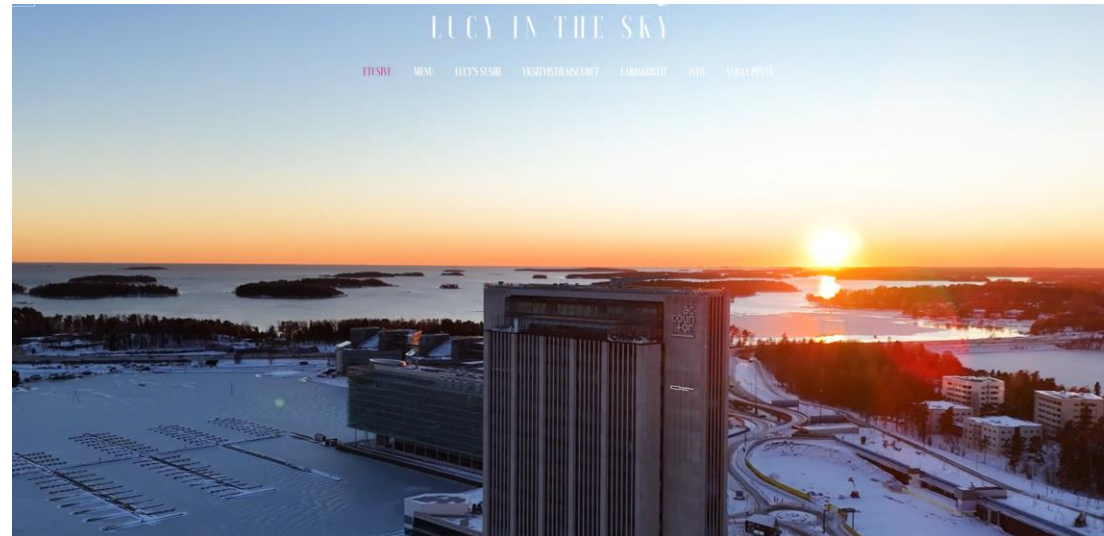
Lunch Day 2: Dylan & Friends

[Dylan & Friends | dylan](#)



Dinner Day 1: Lucy in the Sky

[Lucy in the Sky | Ravintola espoo | Keilaniementie 1, Espoo, Finland](#)





# Optional Activity after Day 2: Cultural Center of Helsinki

Musiikkitalo (House of Music Concert Hall)

[Services - Musiikkitalo](#)



Finlandiatalo (Finlandia Concert Hall)

[Finlandia Hall is the venue of memorable experiences](#)



Oodi Central Library

[Home - Oodi](#)



Museum of Contemporary Art Kiasma

[Museum of Contemporary Art Kiasma | Finnish National Gallery](#)



# Flight Travel & Accommodation Booking Dates

- Due to the **time difference (Finland is GMT +2 time zone)** limited amount of direct flights to Helsinki from western Europe, we recommend to arrive already on **Sunday 27th April** if possible.
- **Traveling back home should take place on Tuesday evening or Wednesday noon**, depending on the flight connections.
- If the project meeting agenda extends to or you decide to stay until Wednesday 30th April, we will suggest some optional dinner locations for Tuesday night as well. In this case the location would be at Helsinki center and we might be able to enjoy some local cultural experiences.
- Please note that representatives from the owners of GTM, **Gramex and Teosto**, are aiming to join the meeting on **Monday 28th April between 10-11AM and/or 2.30-4PM**, depending on the person.
  - > let's align the meeting agenda





GRAMEX & TEOSTO

**MUSIIKKILUVAT.FI**